
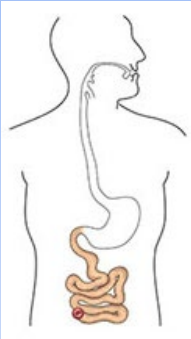
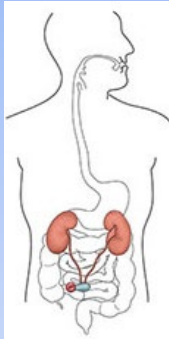


This protocol should be read alongside the Consent to Examination or Treatment Procedure

This protocol applies to all patients under TEWV care who have a stoma.

Colostomy	Ileostomy	Urostomy
		
A surgically-created opening into the colon (large intestine) through the abdomen.	A surgically created opening into the small intestine through the abdomen.	A surgically created opening into the urinary tract through the abdomen.
Expected output: Soft, formed faeces and flatus.	Expected output: Loose faeces and flatus.	Expected output: Urine and mucus.

Staff should offer patients support with stoma care when needed. Self-care should be encouraged where appropriate. General stoma care advice can be accessed via the Royal Marsden Manual Online (www.rmmonline.co.uk) using the Trust login details. General stoma care enquires (e.g. cleansing, changing and emptying bags) should be directed to physical health practitioners, or if no practitioner available use the below numbers.

Staff caring for a patient with a stoma must have an awareness of 'warning signs' that would warrant further medical advice:

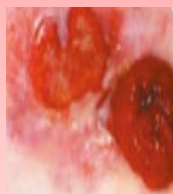
- Blockage – no output, liquid stool which is not normal for patient, bloating/abdominal swelling, cramps, swollen stoma site, nausea and vomiting
- Skin problems – erosion (redness, irritation, broken skin), over granulation, ulceration, maceration
- Mucocutaneous separation (separation of the stoma and the abdominal wall)
- Bleeding from stoma site
- Infection – swelling, inflammation, discharge, odour, altered NEWS2 ****Always urgently escalate to doctor/physical healthcare practitioner if any signs of systemic infection****



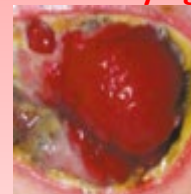
Eroded skin



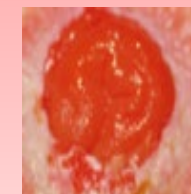
Over granulation



Ulceration



Mucocutaneous Separation



Maceration

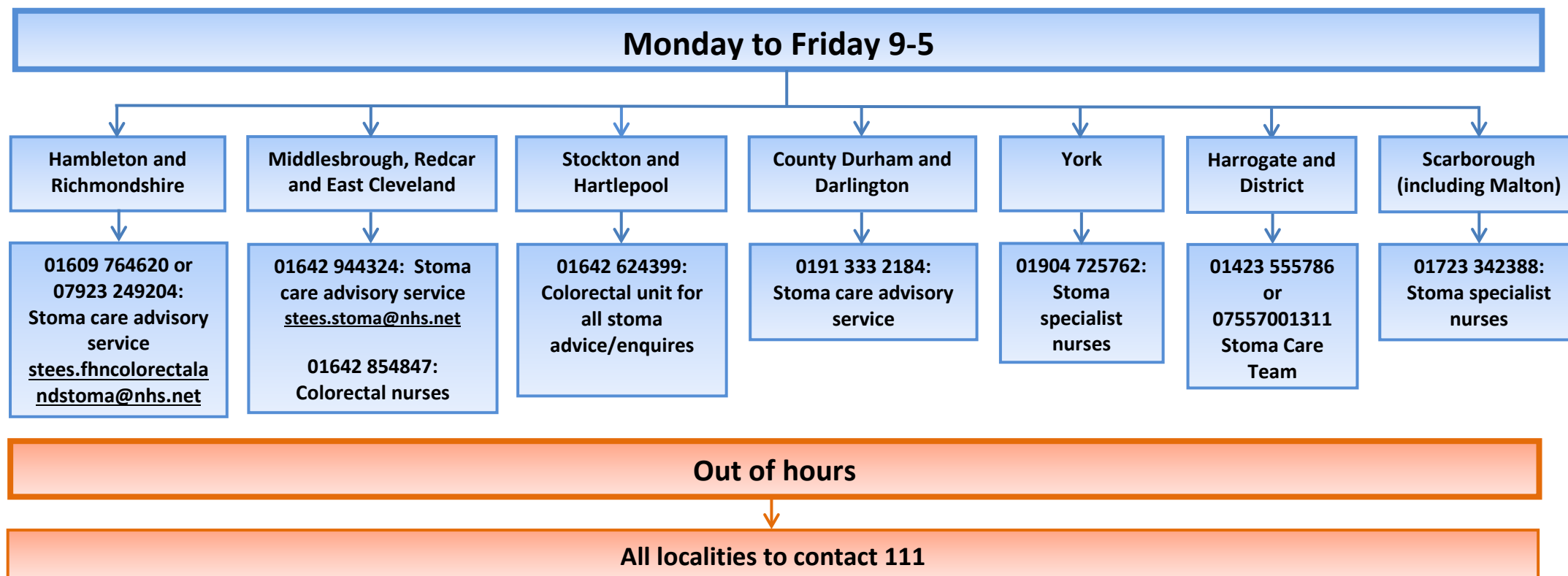
Images provided by Hollister Incorporated (2020)

Title	Stoma Care Advice and Support Protocol		
Approved by	The Fundamental Standards of Holistic Care, Clinical Advisory Group	Date of Approval	04 September 2024
Protocol Number	CLIN-0094-003-v2	Date of Review	04 September 2027

First contact for all stoma concerns should be medic on site/on call or physical healthcare practitioners.

If further advice is needed the following sources can be accessed.

For inpatients contact locality based on ward location.
For discharge planning contact locality based on discharge destination.



Title	Stoma Care Advice and Support Protocol		
Approved by	The Fundamental Standards of Holistic Care, Clinical Advisory Group	Date of Approval	04 September 2024
Protocol Number	CLIN-0094-003-v2	Date of Review	04 September 2027

Equality Impact Assessment Screening Form

Section 1	Scope
Name of service area/directorate/department	Nursing and Governance/ Tissue Viability Service
Title	Stoma Care Advice and Support Protocol
Type	Procedure/guidance
Geographical area covered	Trust-wide
Aims and objectives	To support staff who care for patients with a stoma.
Start date of Equality Analysis Screening	19 th August 2024
End date of Equality Analysis Screening	19 th August 2024

Title	Stoma Care Advice and Support Protocol		
Approved by	The Fundamental Standards of Holistic Care, Clinical Advisory Group	Date of Approval	04 September 2024
Protocol Number	CLIN-0094-003-v2	Date of Review	04 September 2027

Section 2	Impacts
Who does the Policy, Procedure, Service, Function, Strategy, Code of practice, Guidance, Project or Business plan benefit?	Trust staff and patients
Will the Policy, Procedure, Service, Function, Strategy, Code of practice, Guidance, Project or Business plan impact negatively on any of the protected characteristic groups? Are there any Human Rights implications?	<ul style="list-style-type: none"> • Race (including Gypsy and Traveller) NO • Disability (includes physical, learning, mental health, sensory and medical disabilities) NO • Sex (Men and women) NO • Gender reassignment (Transgender and gender identity) NO • Sexual Orientation (Lesbian, Gay, Bisexual, Heterosexual, Pansexual and Asexual etc.) NO • Age (includes, young people, older people – people of all ages) NO • Religion or Belief (includes faith groups, atheism and philosophical beliefs) NO • Pregnancy and Maternity (includes pregnancy, women / people who are breastfeeding, women / people accessing perinatal services, women / people on maternity leave) NO • Marriage and Civil Partnership (includes opposite and same sex couples who are married or civil partners) NO • Armed Forces (includes serving armed forces personnel, reservists, veterans and their families) NO • Human Rights Implications NO (Human Rights - easy read)
Describe any negative impacts / Human Rights Implications	This procedure will not negatively impact upon any of the protected characteristic groups.
Describe any positive impacts / Human Rights Implications	Service users receive safe, effective and appropriate stoma care and interventions.

Title	Stoma Care Advice and Support Protocol		
Approved by	The Fundamental Standards of Holistic Care, Clinical Advisory Group	Date of Approval	04 September 2024
Protocol Number	CLIN-0094-003-v2	Date of Review	04 September 2027

Section 3	Research and involvement
What sources of information have you considered? (e.g. legislation, codes of practice, best practice, nice guidelines, CQC reports or feedback etc.)	Colostomy UK Bowel Cancer UK
Have you engaged or consulted with service users, carers, staff and other stakeholders including people from the protected groups?	Yes
If you answered Yes above, describe the engagement and involvement that has taken place	This algorithm has been discussed with the Fundamental Standards of Holistic Care Clinical Advisory Group who supports patients from a range of protected characteristics on a daily basis.
If you answered No above, describe future plans that you may have to engage and involve people from different groups	N/A

Section 4	Training needs
As part of this equality impact assessment have any training needs/service needs been identified?	No
Describe any training needs for Trust staff	N/A
Describe any training needs for patients	N/A
Describe any training needs for contractors or other outside agencies	N/A

Check the information you have provided and ensure additional evidence can be provided if asked.

Title	Stoma Care Advice and Support Protocol		
Approved by	The Fundamental Standards of Holistic Care, Clinical Advisory Group	Date of Approval	04 September 2024
Protocol Number	CLIN-0094-003-v2	Date of Review	04 September 2027