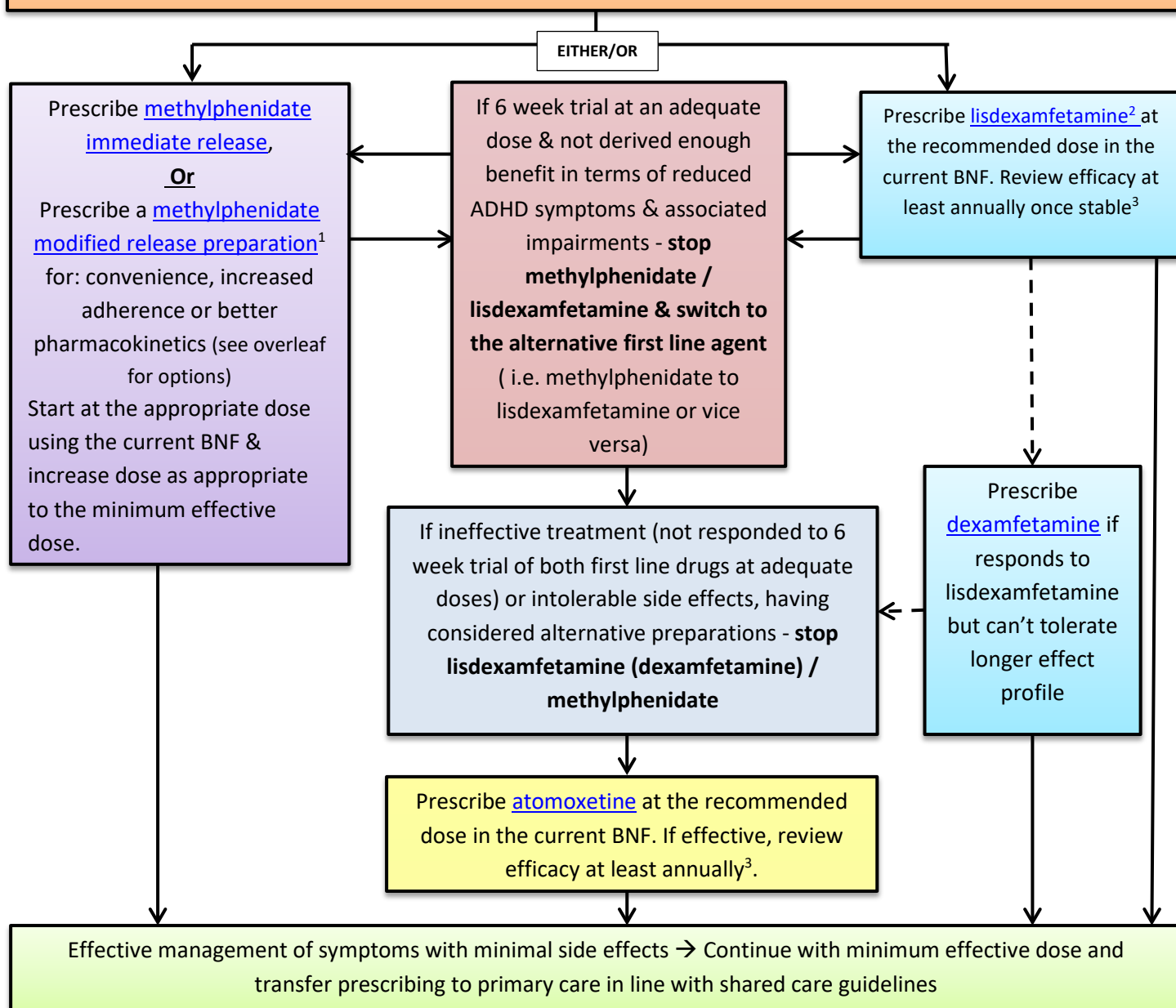


PRESCRIBING GUIDELINES FOR ATTENTION DEFICIT HYPERACTIVITY DISORDER (ADHD) IN ADULTS

Complete baseline ADHD assessment & offer medication to adults if:

- Their ADHD symptoms are still causing significant impairment in at least one domain after environmental modifications have been implemented and reviewed

For pre-treatment assessment & treatment planning see [NICE Guidance](#) & print/provide patient information leaflets from [Choice and medication](#) website



PRESCRIBING ADVICE FOR ALL PATIENTS

Prior to initiation check the [BNF](#) or relevant [product information](#) for any **cautions** or **contra-indications** to the chosen treatment. Review diagnosis and co-morbidities if expected response to treatment is not observed, especially when changing type of drug treatment (stimulant to non-stimulant, and vice versa). Seek second opinion or refer to tertiary services any adult unresponsive to one or more stimulants or one non-stimulant. Consider shared care (where this has been agreed) once patient is clinically stable. Consider adjunctive therapies only with advice from tertiary service: e.g. atypical antipsychotics (co-existing pervasive aggression, rages or irritability) or guanfacine (both unlicensed)¹

1. For advice on appropriate dosages or conversion, please contact a member of the Trust pharmacy team

2. Capsules may be opened and the capsule contents sprinkled onto a small amount (tablespoon) of apple sauce or yoghurt and given immediately, and not stored for future use

PRESCRIBING GUIDELINES FOR ATTENTION DEFICIT HYPERACTIVITY DISORDER (ADHD) IN ADULTS

AVAILABLE METHYLPHENIDATE MODIFIED-RELEASE PREPARATIONS (see guidance [here](#) for more information on relative pharmacokinetics)

Brand	Available strengths	Description	Release profile	NHS indicative price (30)	Brand	Available strengths	Description	Release profile	NHS indicative price (30)
Preparations with 22% immediate-release component and 78% extended-release components					Preparations with 30% immediate-release component and 70% extended-release component				
Delmosart tablets	18 mg	Yellow capsule shape tablet	Immediate-release component gives a maximum plasma concentration after 1-2 hours; extended-release component gives a second peak after 6-8 hours. Duration of action up to 12 hours.	£15.57	Equasym XL capsules²	10 mg	Dark green opaque capsule	Immediate-release component gives a maximum plasma concentration after 1.5 hours; extended-release component gives a second peak after 6 hours. Duration of action up to 8 hours.	£25.00
	27 mg	Grey capsule shape tablet		£18.39		20 mg	Blue opaque capsule		£30.00
	36 mg	White capsule shape tablet		£21.23		30 mg	Reddish brown opaque capsule		£35.00
	54 mg	Red capsule shape tablet		£36.79	Preparations with 50% immediate-release component and 50% extended-release component				
Xenidate XL tablets	18 mg	Yellow round tablet		£15.57	Medikinet XL capsules² <i>Take with or after breakfast</i>	5 mg	White capsule	Immediate-release component gives a rapid peak plasma concentration; extended-release component gives a second peak after 3-4 hours. Duration of action up to 8 hours.	£24.04
	27 mg	Yellow oblong tablet		£18.39		10 mg	Lilac/ white capsule		£24.04
	36 mg	White oblong tablet		£21.21		20 mg	Lilac capsule		£28.86
	54 mg	Red oblong tablet		£36.79		30 mg	Purple/ light grey capsule		£33.66
Xaggitin XL tablets	18 mg	Yellow capsule shape tablet		£15.58		40 mg	Purple/ grey capsule		£57.72
	27 mg	Grey capsule shape tablet		£18.40		50 mg	Violet/dark violet capsule		£62.52
	36 mg	White capsule shape tablet		£21.22	60 mg	Dark violet capsule	£67.32		
	54 mg	Red/brown capsule shape tablet		£36.80	Ritalin XL capsules² <i>Can be taken with or without food</i>	10 mg	Brown opaque capsule	Immediate-release component gives a rapid peak plasma concentration at 1-2 hours; extended-release component gives a second peak after 4 hours. Duration of action up to 8 hours.	£23.92
Concerta XL tablets	18 mg	Yellow capsule shape tablet	£31.19	20 mg		White opaque capsule	£28.72		
	27 mg	Grey capsule shape tablet	£36.81	30 mg		Yellow opaque capsule	£33.49		
	36 mg	White capsule shape tablet	£42.45	40 mg		Brown opaque capsule	£57.43		
	54 mg	Red capsule shape tablet	£73.62	60 mg		Brown and yellow opaque capsule	£66.98		
Matoride XL tablets	18 mg	Yellow round tablet	£15.58						
	36 mg	White round tablet	£21.22						
	54 mg	Pink round tablet	£36.80						