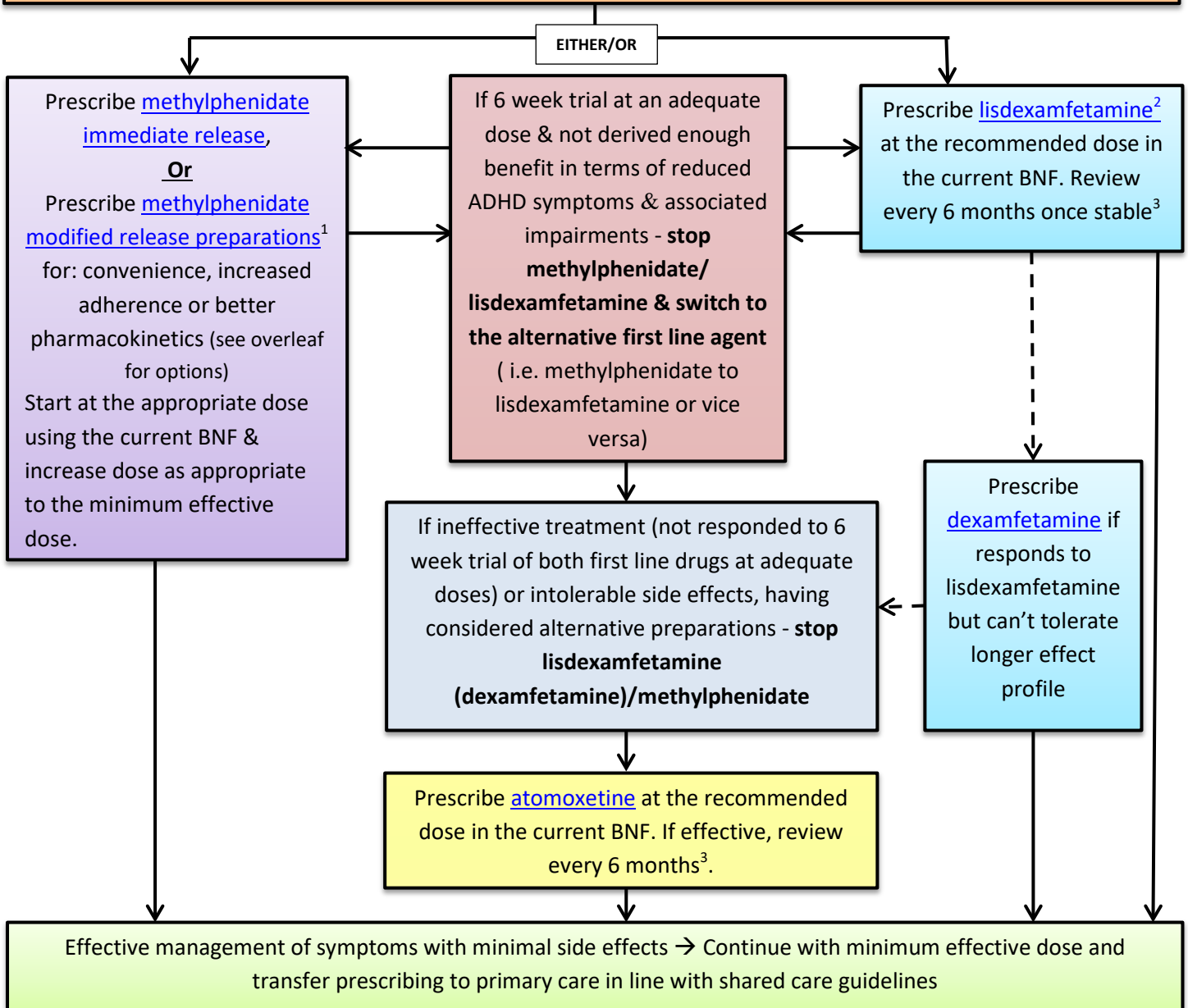


**PRESCRIBING GUIDELINES FOR  
ATTENTION DEFICIT HYPERACTIVITY DISORDER (ADHD) IN ADULTS**

**Complete baseline ADHD assessment & offer medication to adults if:**

- Their ADHD symptoms are still causing significant impairment in at least one domain after environmental modifications have been implemented and reviewed

For pre- treatment assessment & ongoing monitoring click [here](#) & print patient information leaflets from [Choice and medication](#) website



**PRESCRIBING ADVICE FOR ALL PATIENTS**

Review diagnosis and co-morbidities if expected response to treatment is not observed, especially when changing type of drug treatment (stimulant to non-stimulant, and vice versa). Seek second opinion or refer to tertiary services any adult unresponsive to one or more stimulants or one non-stimulant

Consider shared care (where this has been agreed) once patient is clinically stable.

Consider adjunctive therapies only with advice from tertiary service: e.g. atypical antipsychotics (co-existing pervasive aggression, rages or irritability) or guanfacine (both unlicensed)<sup>1</sup>

1. For advice on appropriate dosages or conversion, please contact a member of the Trust pharmacy team
2. Capsules may be opened and the capsule contents sprinkled onto a small amount (tablespoon) of apple sauce or yoghurt and given immediately, and not stored for future use.

|                 |   |                  |                             |
|-----------------|---|------------------|-----------------------------|
| Title           | Prescribing Guidelines for ADHD in Adults |                  |                             |
| Approved by     | Drug & Therapeutics Committee             | Date of Approval | 24 <sup>th</sup> May 2018   |
| Protocol Number | PHARM-0091-v1                             | Date of Review   | 24 November 2021 (extended) |

**PRESCRIBING GUIDELINES FOR  
ATTENTION DEFICIT HYPERACTIVITY DISORDER (ADHD) IN ADULTS**

**AVAILABLE METHYLPHENIDATE MODIFIED-RELEASE PREPARATIONS**

See guidance [here](#) for more information on relative pharmacokinetics

| Brand  | Available strengths | Description                    | Release profile   | NHS indicative price (30 units) |
|--|---------------------|--------------------------------|---|---------------------------------|
| <b>Preparations with 22% immediate-release component and 78% extended-release components</b> |                     |                                |   |                                 |
| Delmosart tablets  | 18mg                | Yellow capsule shape tablet    | Immediate-release component gives a maximum plasma concentration after 1-2 hours; extended-release component gives a second peak after 6-8 hours.<br>Duration of action up to 12 hours. | £15.59                          |
|  | 27mg                | Grey capsule shape tablet      |   | £18.41                          |
|  | 36mg                | White capsule shape tablet     |   | £21.23                          |
|  | 54mg                | Red capsule shape tablet       |   | £36.81                          |
| Xenidate XL tablets  | 18mg                | Yellow round tablet            |   | £15.57                          |
|  | 27mg                | Yellow oblong tablet           |   | £18.39                          |
|  | 36mg                | White oblong tablet            |   | £21.21                          |
|  | 54mg                | Red oblong tablet              |   | £36.79                          |
| Xaggitin XL tablets  | 18mg                | Yellow capsule shape tablet    |   | £15.58                          |
|  | 27mg                | Grey capsule shape tablet      |   | £18.40                          |
|  | 36mg                | White capsule shape tablet     |   | £21.22                          |
|  | 54mg                | Red/brown capsule shape tablet |   | £36.80                          |
| Concerta XL tablets  | 18mg                | Yellow capsule shape tablet    |   | £31.19                          |
|  | 27mg                | Grey capsule shape tablet      |   | £36.81                          |
|  | 36mg                | White capsule shape tablet     |   | £42.45                          |
|  | 54mg                | Red capsule shape tablet       |   | £73.62                          |
| Matoride XL tablets  | 18mg                | Yellow round tablet            | £15.58  |                                 |
|  | 36mg                | White round tablet             | £21.22  |                                 |
|  | 54mg                | Pink round tablet              | £36.80  |                                 |
| <b>Preparations with 30% immediate-release component and 70% extended-release component</b>  |                     |                                |   |                                 |
| Equasym XL capsules <sup>2</sup>   | 10mg                | Dark green opaque capsule      | Immediate-release component gives a maximum plasma concentration after 1.5 hours; extended-release component gives a second peak after 6 hours.<br>Duration of action up to 8 hours.    | £25.00                          |
|  | 20mg                | Blue opaque capsule            |   | £30.00                          |
|  | 30mg                | Reddish brown opaque capsule   |   | £35.00                          |
| <b>Preparations with 50% immediate-release component and 50% extended-release component</b>  |                     |                                |   |                                 |
| Medikinet XL capsules <sup>2</sup><br><i>Take with or after breakfast</i>                    | 5mg                 | White capsule                  | Immediate-release component gives a rapid peak plasma concentration; extended-release component gives a second peak after 3-4 hours.<br>Duration of action up to 8 hours.               | £24.04                          |
|  | 10mg                | Lilac/ white capsule           |   | £24.04                          |
|  | 20mg                | Lilac capsule                  |   | £28.86                          |
|  | 30mg                | Purple/ light grey capsule     |   | £33.66                          |
|  | 40mg                | Purple/ grey capsule           |   | £57.72                          |
|  | 50mg                | Violet/dark violet capsule     |   | £62.52                          |
|  | 60mg                | Dark violet capsule            |   | £67.32                          |

|                 |   |                  |                             |
|-----------------|---|------------------|-----------------------------|
| Title           | Prescribing Guidelines for ADHD in Adults |                  |                             |
| Approved by     | Drug & Therapeutics Committee             | Date of Approval | 24 <sup>th</sup> May 2018   |
| Protocol Number | PHARM-0091-v1                             | Date of Review   | 24 November 2021 (extended) |